

STORAGE GUIDELINES

Housing Materials

Paper or Plastic ?



STORAGE GUIDELINES

Housing Materials

Plastics

Polyethylene
Polypropylene
Polyester

STORAGE GUIDELINES

Housing Materials

Papers

Glassine - Kraft

envelopes – writing papers –
paper towels

STORAGE GUIDELINES

Archival Quality

STORAGE GUIDELINES

Archival Quality

Acid-free

Permanent - Durable

Museum Quality

All Rag

Unbleached

STORAGE GUIDELINES

Archival Quality

P.A.T.

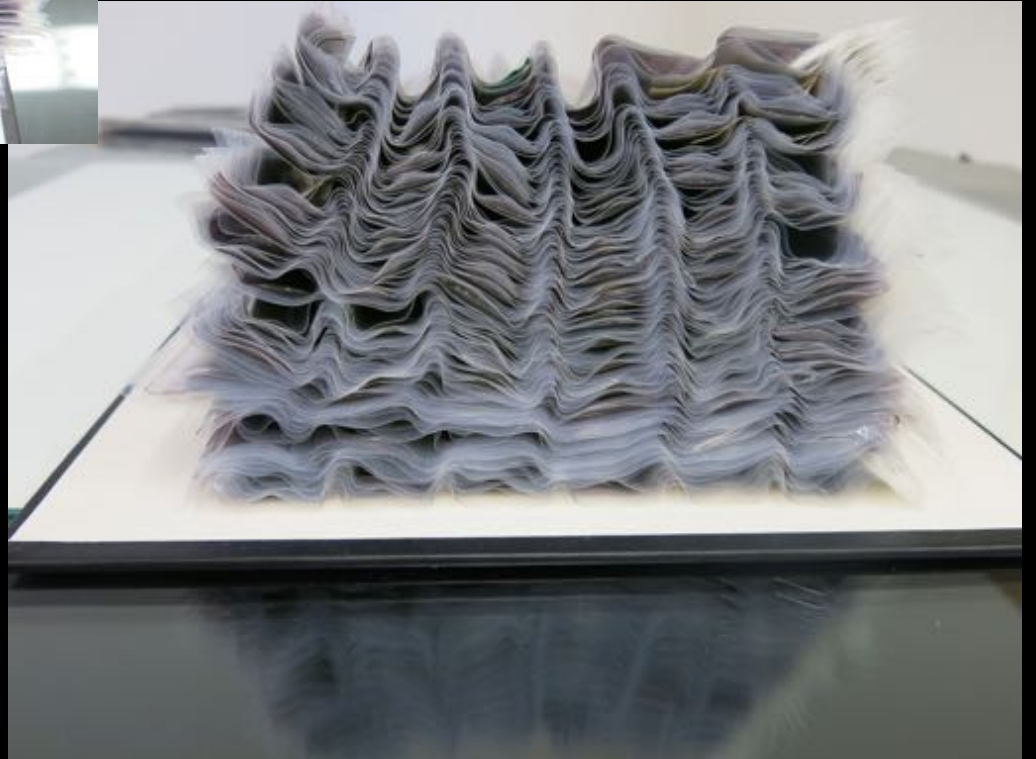
(Photographic Activity Test)

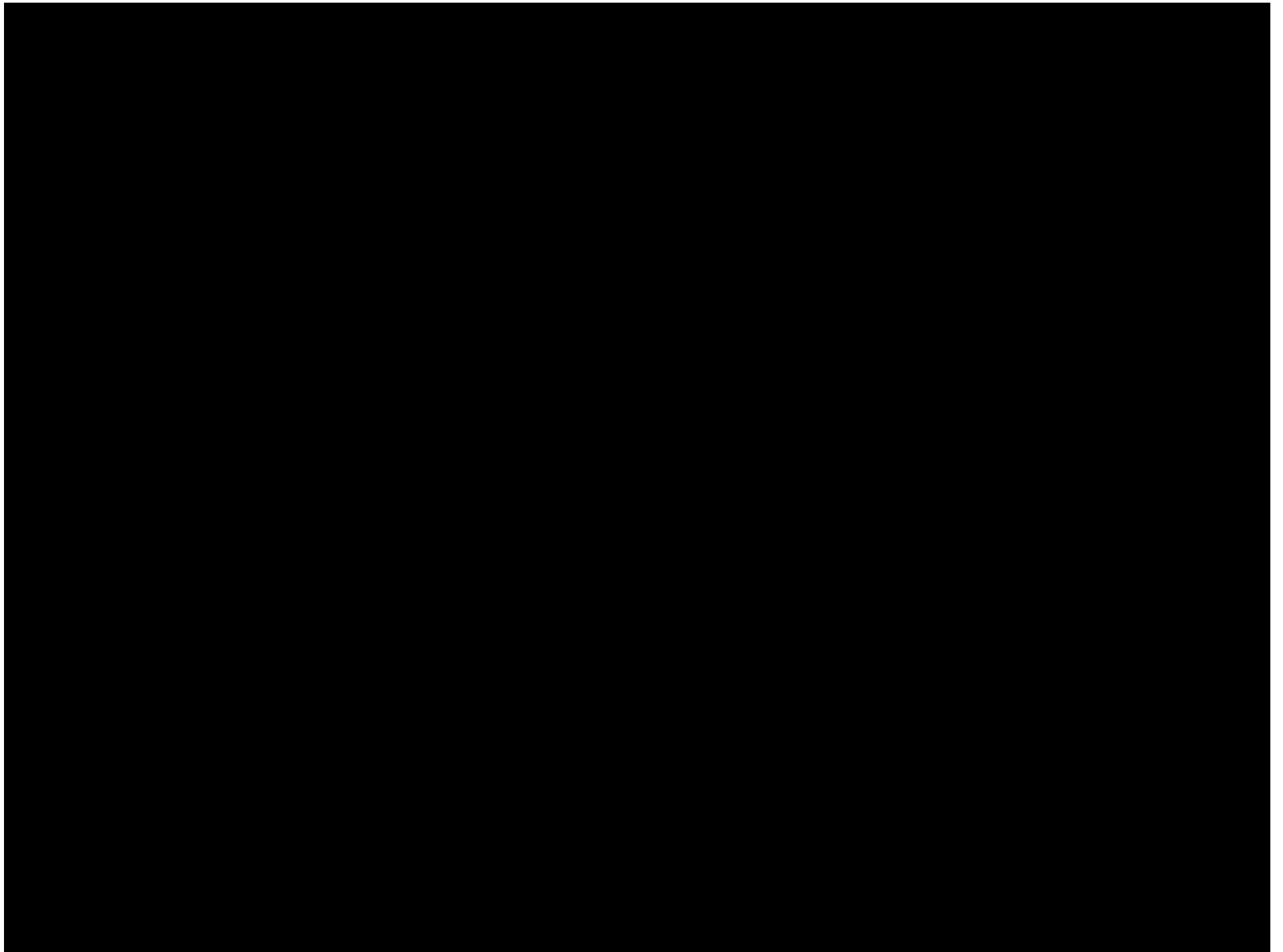
STORAGE GUIDELINES

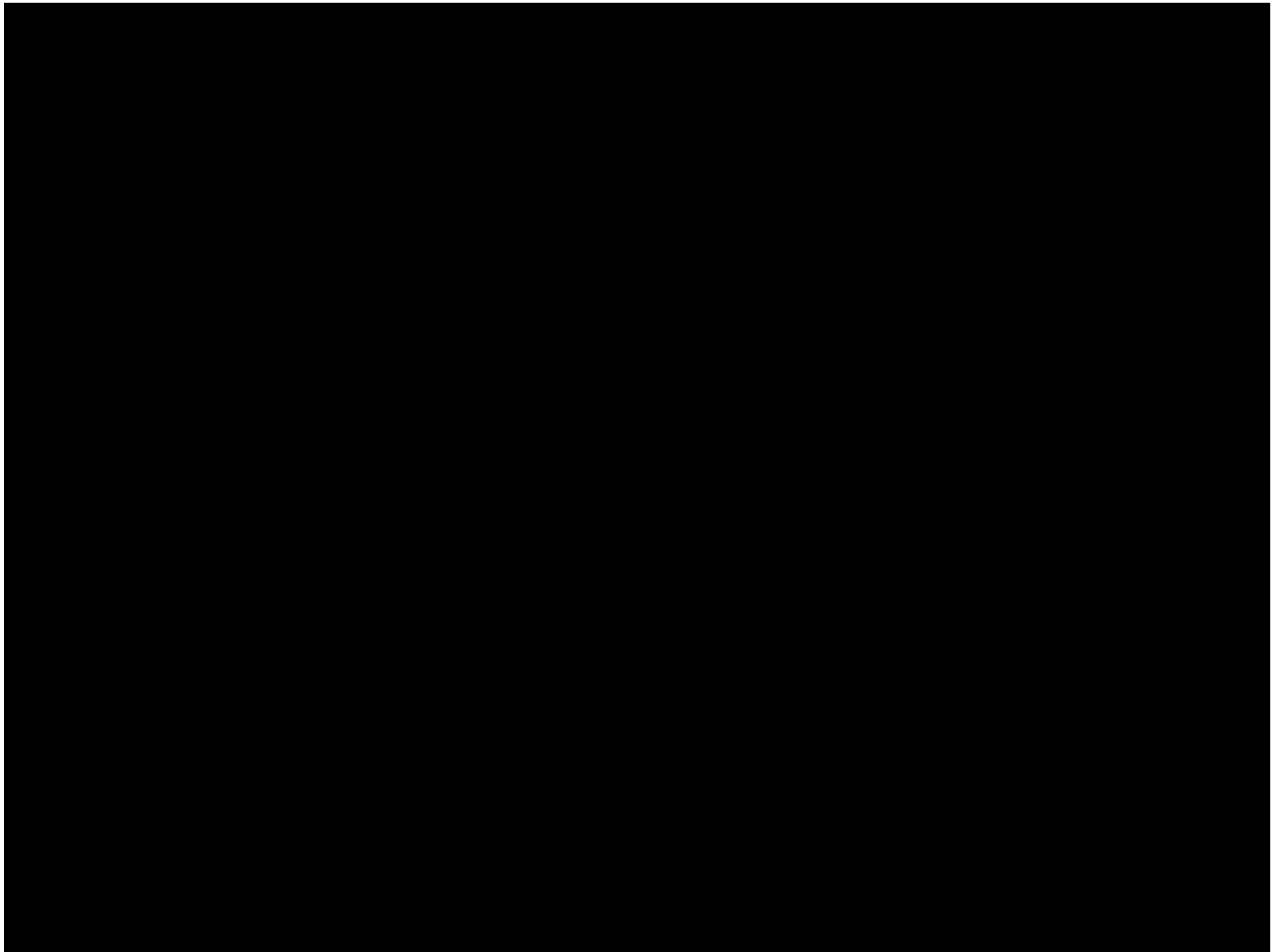
Good Quality Materials

Poorly Used







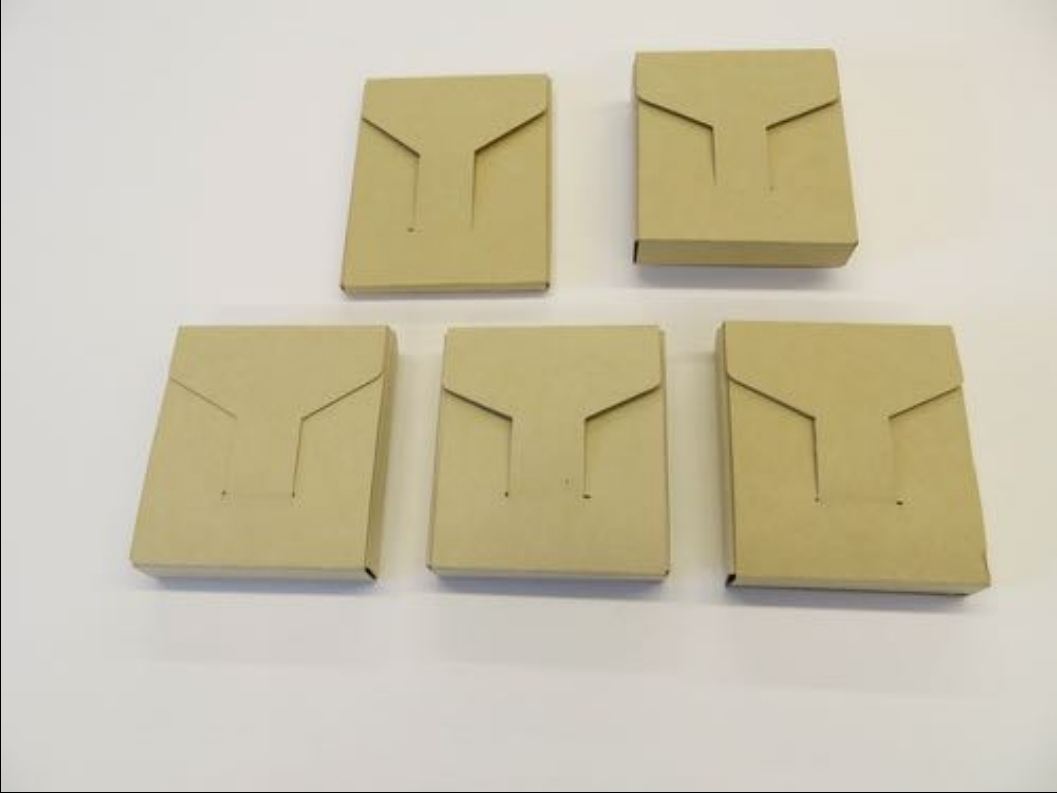


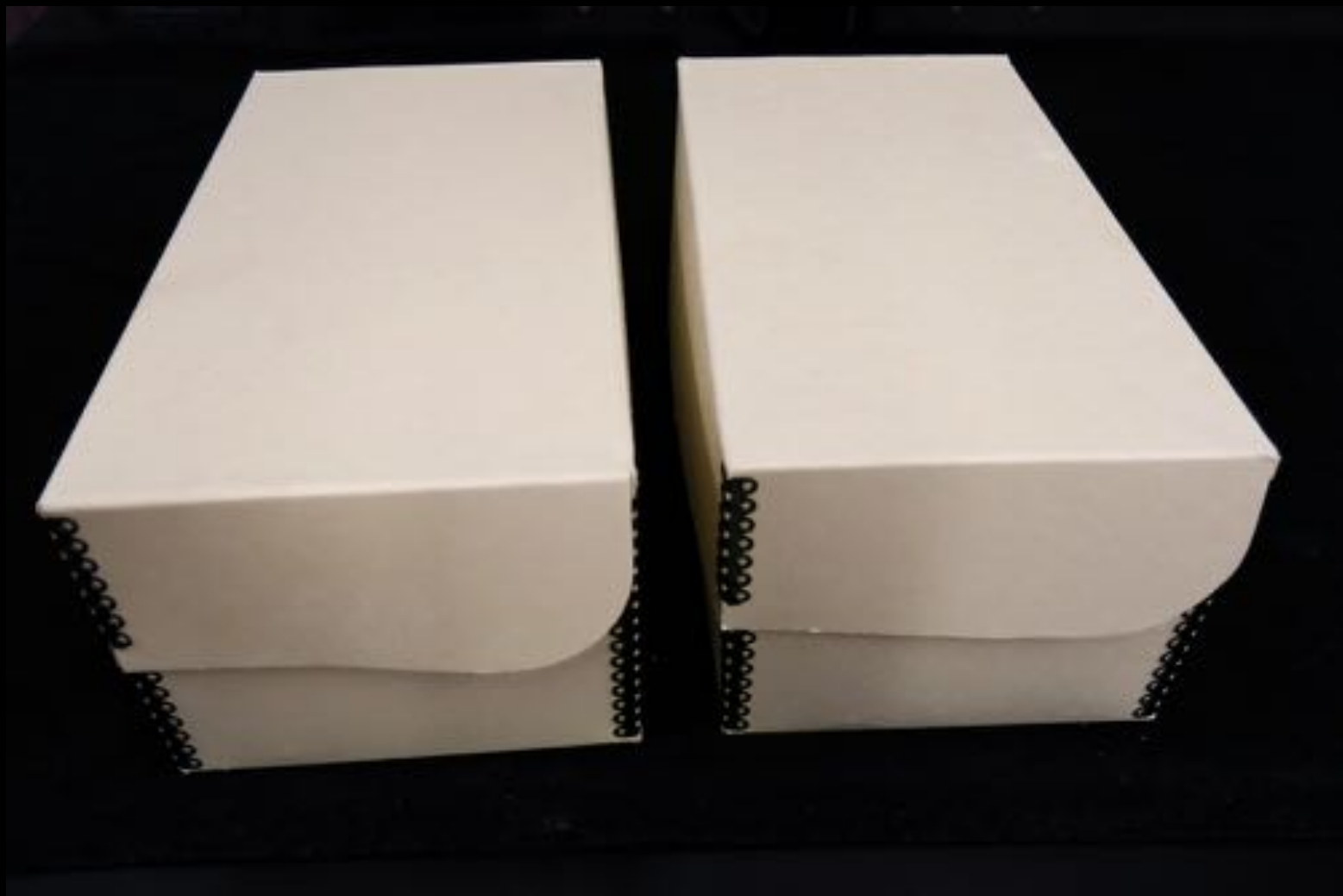
Protective Enclosures



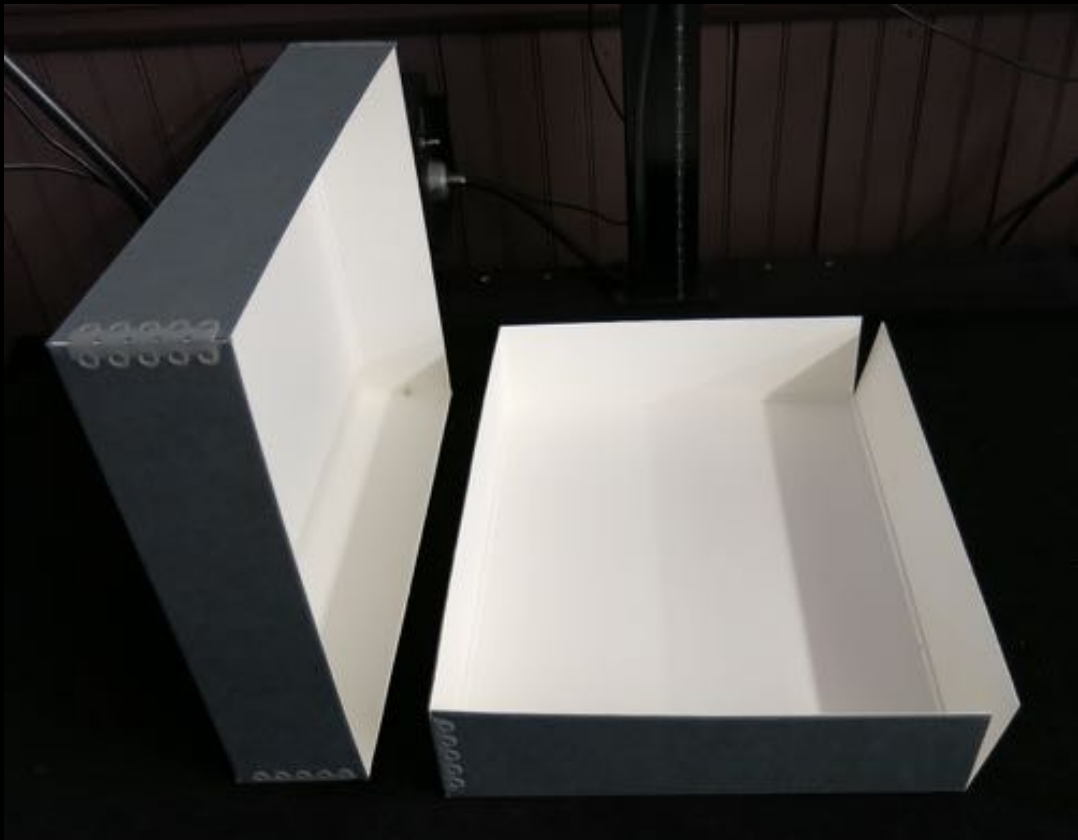














Materials Set
Black (10/10/10/10)
No. 84, 82, 80, 78, 76

Materials Set
Black (10/10/10/10)
No. 84, 82, 80, 78, 76

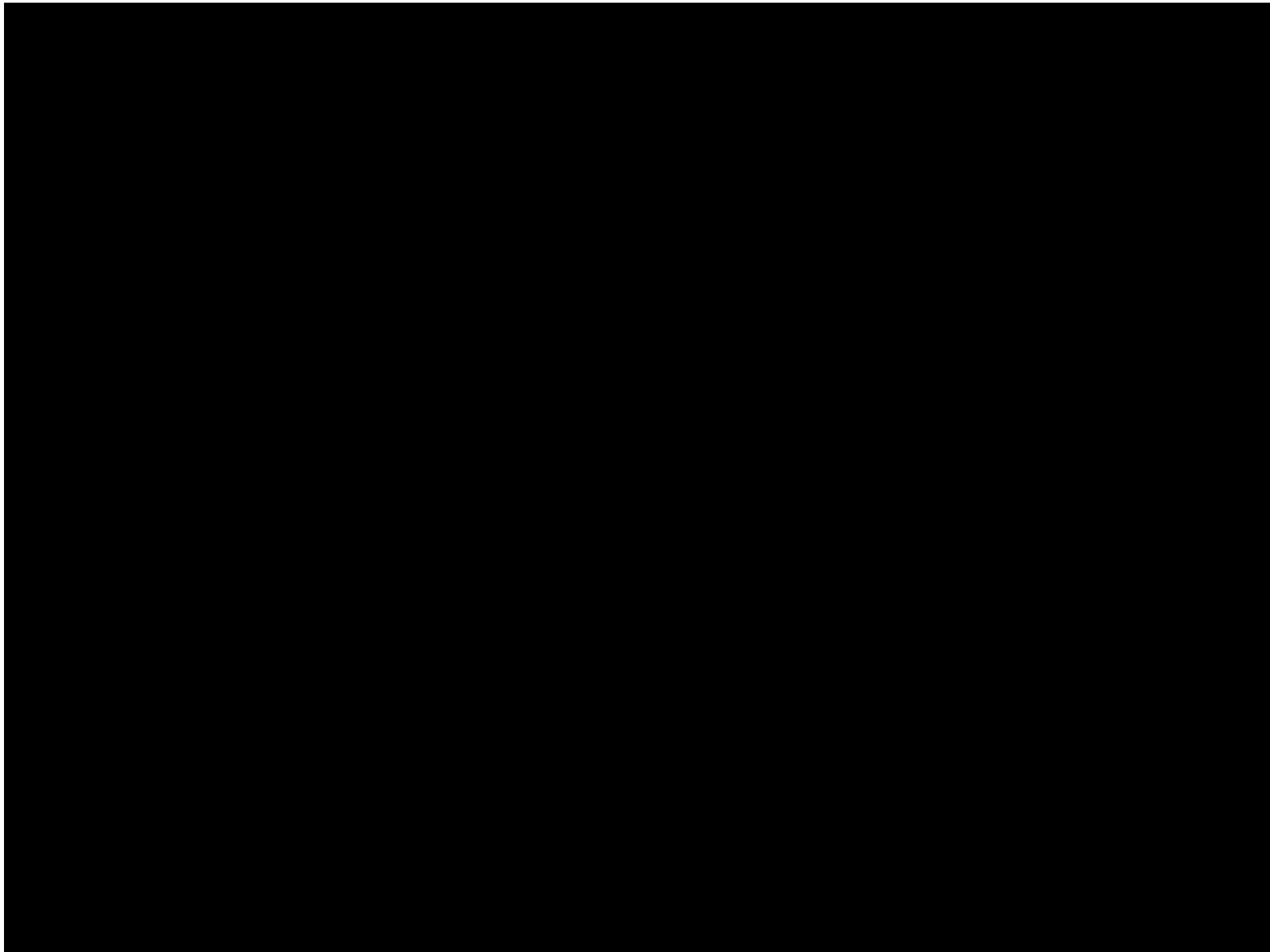
Materials Set
Black (10/10/10/10)
No. 84, 82, 80, 78, 76











LIMITS OF CONSERVATION TREATMENT



Damage

Irving Penn - Platinum Print



Deterioration

Edward Weston - silver gelatin print

LIMITS OF CONSERVATION TREATMENT

Physical Considerations

Importance of Process

Location and Extent of Damage

Conservation Principles

Respect for Original

Minimum Intervention

Other Considerations

Cost of Treatment

Value of Photograph

The Limits of Photograph Conservation Treatments

- + PHYSICAL DAMAGES
- - CHEMICAL / PHOTOCHEMICAL DEGRADATION
- Original Processing Faults
- Color Shift or Loss
- Loss of Image density
- Oxidation







Exposure

Photograph Conservation Treatments

- Tear Repair
- Dry Cleaning
- Aqueous Cleaning
- Non-aqueous (solvent) cleaning
- Humidification and Flattening
- Removal from Mounts
- Stain Removal or Reduction
- Hinging, Lining and Re-mounting
- Compensation for Losses / Fills



The Limits of Photograph Conservation Treatments

- Physical Damages

- Process Type

- Fiber based or RC
 - Emulsion or none

- Location of Damage

- Clear Highlight
 - Busy image area

- Degree of Damage

- Minor
 - Major





BEFORE TREATMENT





Photograph Conservation Treatments

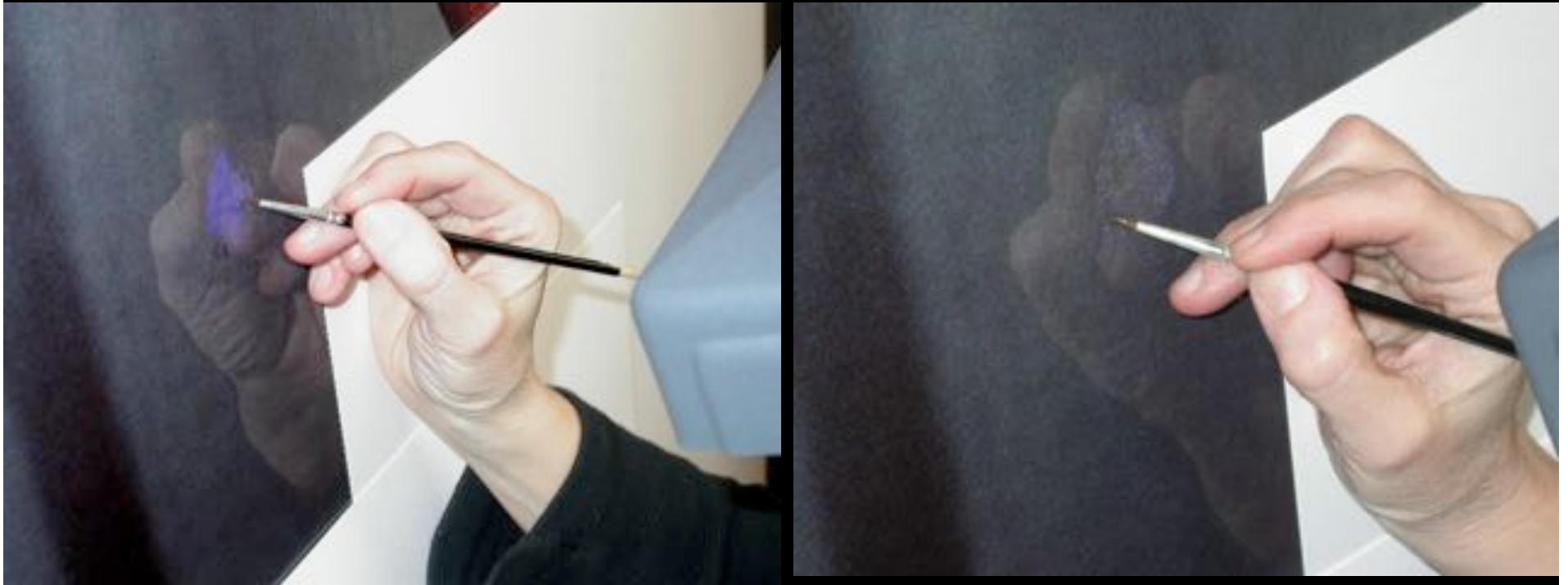


Barbara Kasten
Construct #19, 1982
Silver Dye Bleach



Winsor & Newton watercolors

Photograph Conservation Treatments



Compensation

Before and During Treatment

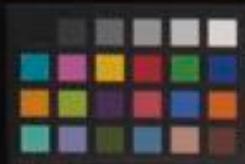
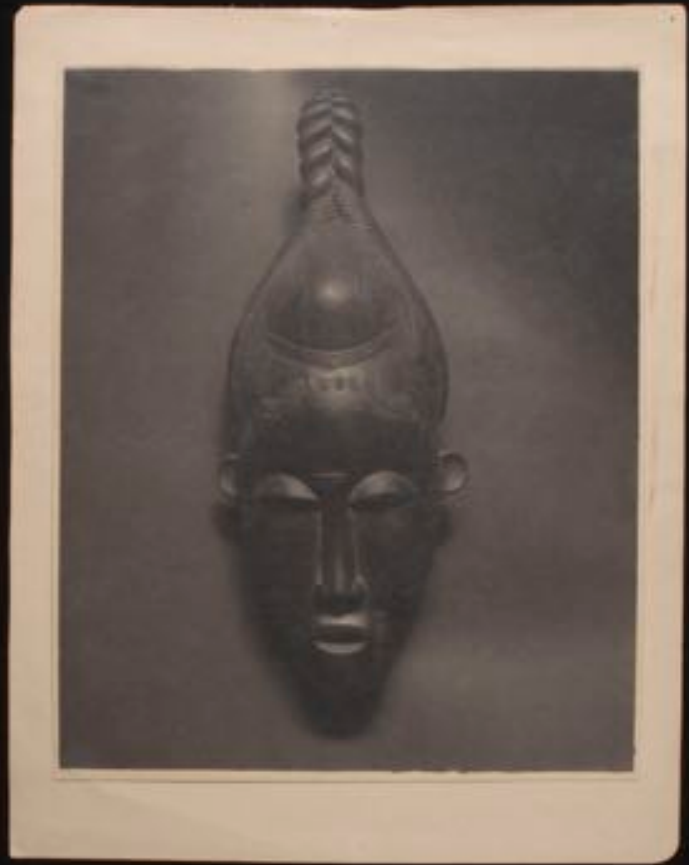
Silver Dye Bleach (Ilfochrome)



BEFORE TREATMENT



BEFORE TREATMENT



AFTER TREATMENT









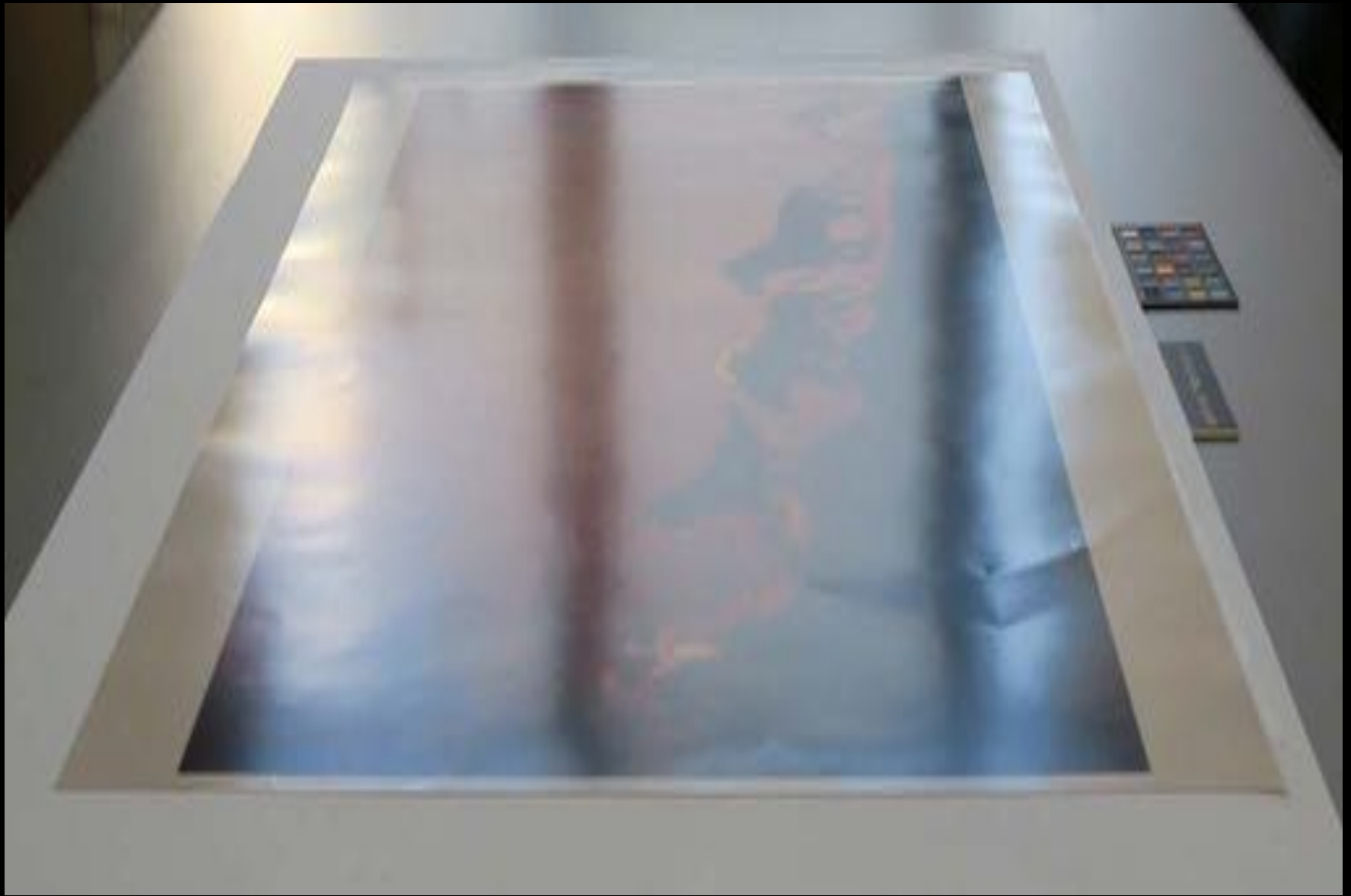




PHOTO RESEARCH








Plastic Laminate

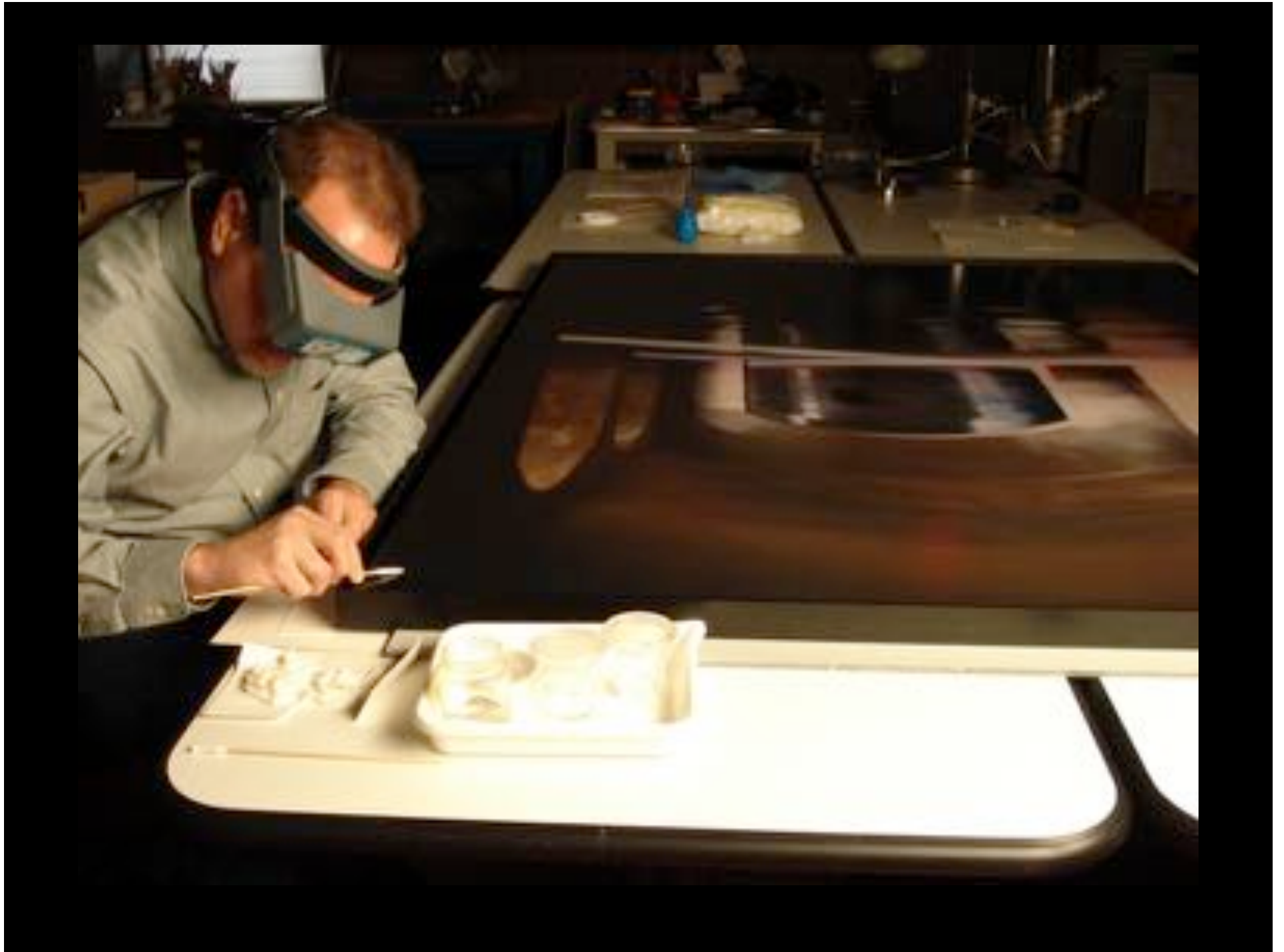
gouged

repaired



Surface Dirt - Accretions

DURING TREATMENT





abrasions











Be Aware

Be Knowledgeable

Be Prepared

RESOURCES

- MUSEUMS
- REGIONAL CENTERS
- EDUCATIONAL INSTITUTIONS
- PRIVATE CONSERVATORS

The Better Image®

Devoted to the Conservation and Preservation
of Art and Historic Photographs

460 West 34th Street
New York City
212 - 929 - 0599

The Milford Opera House
Milford • New Jersey 08848
908 - 995 – 2600

Emeryville • California
415 – 954 - 2958

info@thebetterimage.com

www.thebetterimage.com

